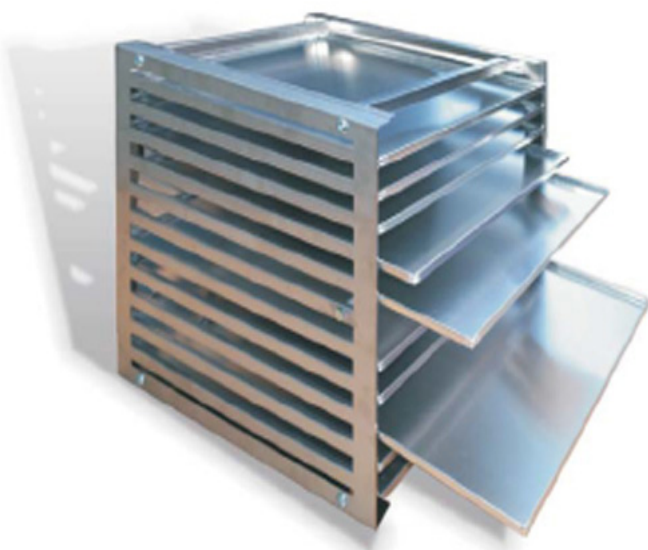


## TRAY-HOLDING RACK (10 SPACES) AND SINGLE TRAY FOR DRY CABINETS

The tray-holding Ghibli rack allows you to deposit safely and in an orderly fashion trays for dry cabinets without worrying about possible electrostatic charges coming from the working surface.



Single tray  
(cod.20949)

### Rack

Code	20950
Structure	Stainless steel AISI 304
Weight	6.5kg without trays
Working height	25mm between trays

### Tray

Code	20949
Measures	495x565x12mm
Thickness	12/10
Weight	1kg



[www.maxderbanchi.com](http://www.maxderbanchi.com)



complies to  
**IEC61340-5-1**  
regulation

Made in Italy

